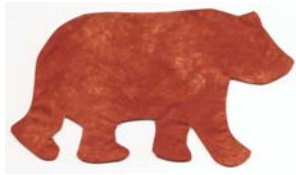


July Lotto: Quilt Labels



Labeling your quilt is the final step in finishing your quilt. We all know how important a label is but it is often forgotten. Wouldn't it be nice to have some ready-made labels for five of your quilts?

Guidelines:

- *All edges must be finished or pressed under 1/4".
- *Do not write words on the label.
- *Be creative: Think seasons, holidays, favorite colors, nature, children, etc.



Method Options:

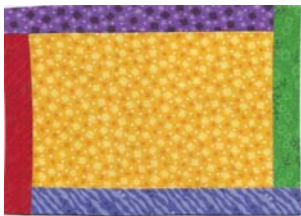
1) One piece of fabric:

Any shape (square, rectangle, hexagon, etc.)
Simply press edges under 1/4".



2) Pieced label:

Add borders or piece a design.



3) Miniature quilt block:

(Example: Square in a Square)



4) Fusible interfacing:

Great for curves, ovals, circles & creative shapes like the 'bear' label shown above.

Sew around shape. Slash & turn; finger press (ready to fuse onto quilt). Or, fuse & appliqué onto larger fabric label.



5) Embellishment Ideas

Embroidery by hand or machine.

Applique a design.

Fabric markers/pens, trim, rick rack, etc.



For every 5 labels entered in the lotto, there will be a winner. Your chances of winning are good so be creative & make several!

You will have one chance to win for each label you make.

Happy Sewing!

Mary Jo Anderson
Julie Peterson

chasandy@kmtel.com
japtrsn@hotmail.com